

Quantification of the Transport of Chemical Constituents from the Polar Vortex to Middle Latitudes in the Lower Stratosphere using the High-Resolution Advection Model MIMOSA and Effective Diffusivity

Alain Hauchecorne, Sophie Godin, Marion Marchand, Birgit Heese and Claude Souprayen

Service d'Aéronomie du CNRS, BP3, 91371 Verrières-le-Buisson Cedex, France

Abstract. The observed decrease of ozone in the northern mid-latitude lower stratosphere is only partially reproduced by chemical models. The transport of ozone depleted air from the polar vortex is one of the proposed mechanisms to explain the discrepancy. Here we present a study on the quantification of the air mass transported from the polar vortex to mid-latitude during the 4 winters 1996-1997 to 1999-2000, in relation with vortex filamentation and break up, using the high resolution advection model MIMOSA on isentropic surfaces. Sensitivity tests show that the advection model is able to predict the location of polar filaments with an accuracy better than 100 km, limited by uncertainties in meteorological advecting wind fields. The effective diffusivity diagnostic is used to evaluate the intensity of the vortex edge barrier and to quantify the transport of air from the polar vortex to mid-latitude. The intensity of the polar barrier is increasing with height from 400 K to 550 K and is nearly constant above. During periods with a cold and undisturbed vortex, favorable to chlorine activation, the transport is very weak. This suggests that the mid-winter vortex filamentation plays a minor role in the mid-latitude ozone decline. In the opposite limit, during a stratospheric warming up to 30% of the polar vortex air is transported to mid-latitudes. The cumulative transport from early January to end of April across the polar edge varies from almost 5% of the polar vortex air at 675 K in 1997 to 50 % at 435 K in 1999.

1. Introduction

The decrease of total ozone at Northern Hemisphere middle latitudes is now well recognized [*Scientific Assessment of Ozone Depletion*: 1998, 1999]. It is much larger in winter/spring (about 4% / decade) than in summer/autumn (2% / decade). The observed decrease occurs mainly in the lower stratosphere. Until today, the origin of this decrease is an open and controversial question. Several chemical and dynamical mechanisms have been proposed, among them the in-situ activation of halogen species by heterogeneous chemistry on sulfuric acid aerosols, changes in the intensity of the Brewer-Dobson circulation which control the diabatic descent at middle and high latitudes, and the transport from the polar vortex of air depleted in ozone due to the vortex erosion and break up. The goal of this paper is to evaluate the importance of the last proposed mechanism with the help of a high resolution transport model.

Fine-scale layering in lower stratospheric ozone profiles has long been recognized. Analysis of the world-wide network of ozonesondes has allowed *Reid and Vaughan* [1991] to show that layers typically one kilometer thick, either depleted or enriched in ozone, appear preferably in winter and spring in the extratropics, between 12 and 18 km. These authors linked occurrences of such ozone layers, or laminae, to transport across jet streams, and at high latitudes in particular, to the presence and break up of the winter polar vortex. *Reid and Vaughan* [1991] revealed the important role of filaments in the vortex erosion process. There is a clear coincidence of the altitude range with the highest ozone decrease rates and the range with the highest number of ozone filaments observed (13-19 km). The mixing across the vortex edge can also lead to intrusions of mid-latitude air into the lower stratospheric Arctic vortex [*Plumb et al.*, 1994]. Exchange and mixing between vortex and extra-vortex air masses via laminae/filaments can have various effects:

- transport of chemically prepared vortex air from the polar night region to sunlit mid-latitudes resulting in ozone destruction here; this process can take place in mid-winter;

- transport of already ozone-depleted vortex air to mid-latitudes contributing to the observed loss of ozone there;
- transport of ozone poor air from the mid- and low-latitudes lower stratosphere to high latitudes and intrusion into the vortex, and transport of ozone rich air from the high-latitude lower stratosphere to mid-latitudes; these processes cause natural variations of mid- and high-latitude total ozone.

Polar filaments are generated by deformations of the polar vortex edge induced by planetary Rossby waves [McIntyre and Palmer, 1984]. Filaments are stretched by the meridional gradient of zonal wind at the south part of the polar jet. Mechanisms of formation are linked with the large scale structure of the horizontal wind field and are well represented in meteorological analysis models even with a relatively coarse resolution (i.e. T42 in spherical harmonics, equivalent to $2.5^\circ * 2.5^\circ$ horizontal resolution) as demonstrated by Methven and Hoskins [1999] and Weaver *et al.* [2000]. Dissipation and mixing of polar filaments with surrounding mid-latitude air occur when their width is too small to be captured by meteorological models. Though the production of filaments of tracers is strongly related to planetary waves disturbances at the vortex edge, the successive reduction in scale of such filaments has to be halted ultimately by smaller-scale processes leading to molecular mixing. Among those are the cumulative (along the trajectory of the filaments) effect of breaking inertia-gravity waves. The redistribution in latitude of polar air transported by filaments depends on those mechanisms. The intensity and the nature of the mix-down of filaments (in the final steps) may have also an impact on the ozone loss in the Arctic vortex as suggested by Edouard *et al.* [1996] for winter 1994-95 using a very high resolution model with a simplified chemistry. However, this result is questioned by Searle *et al.* [1998a; b] who found for the same winter a very small dependency of ozone loss on model resolution and Sparling *et al.* [1998] who estimated that the effect of model resolution was limited to the vortex edge. A possible effect of small-scale filamentary structures on the deactivation of chlorine at the edge and outside the vortex is also discussed by Tan *et al.* [1998].

Several previous studies have shown that high resolution transport models [Orsolini, 1995; Orsolini *et al.*, 1997] or contour advection with surgery (CAS) [Waugh *et al.*, 1994; Mariotti *et al.*, 1997] can represent the observed filaments down to scales much smaller than the scales resolved in the advecting wind field. For instance, in the case of tropospheric baroclinic eddies, Methven and Hoskins [1999] showed that the ratio between the smaller scale resolved in the wind field and the size of the smaller scale reproduced in the tracer field is at least 6. Manney *et al.* [1998] obtained an improvement in the reproduction of lidar and balloon ozone profiles, using data provided by the Upper Atmospheric Research Satellite (UARS) Microwave Limb Sounder (MLS), when they applied a high resolution reverse trajectory technique initialized with the satellite data. Orsolini *et al.* [1998] reproduced the lamination observed in mid-latitude balloon profiles of long-lived stratospheric species using reverse domain filling trajectories initialized with UARS data.

Here we present an estimation of the transport from the polar vortex to mid-latitudes during winters 1996-1997 to 1999-2000 using a high resolution model of the isentropic advection of a passive tracer and the effective diffusivity diagnostic developed by Nakamura [1996]. The advection model MIMOSA is described in section 2. Section 3 presents a sensitivity study on the accuracy of the location of filaments simulated by the advection model. The effective diffusivity is used in section 4 to evaluate the intensity of the polar barrier and in section 5 to quantify the transport from the polar vortex to mid-latitude. A summary of the results is given in section 6.

2. Model description

MIMOSA (Modélisation Isentrope du transport MésO- Ozone Stratosphérique par Advection) high resolution advection model of potential vorticity (PV) has been developed at Service d'Aéronomie in the frame of the European Union project METRO (MEridional TRansport of Ozone in the lower stratosphere) which was part of

THESEO (Third European Stratospheric Experiment on Ozone) – THESEO 2000 campaigns. The model was used to interpret the observations of ozone laminae in lidar profiles, especially at Observatoire de Haute-Provence (OHP, 44°N, 5.7°E), and to support the planning of an air-borne ozone lidar [Heese *et al.*, 2001] on board of a French Falcon (Mystère 20). The basic assumption is that PV and ozone mixing ratio are very well correlated on an isentropic surface and the location of ozone filaments can be visualized using PV as a quasi passive tracer.

The model runs on an isentropic surface, starting on an orthogonal grid in an azimuthal equidistant projection centered at North Pole (parallels are represented as concentric equidistant circles) It covers latitudes between 10°S and 90°N in the present version. The size of an elementary grid cell is either 37*37 km (3 grid points/degree of latitude) or 18.5*18.5 km (6 grid points/degree). Meteorological data are taken from 6 hourly ECMWF (European Center for Medium-Range Weather Forecast) analysis at 1.125° latitude and longitude resolution, corresponding to the T106 truncation. They are provided by the THESEO data base set up at NILU (Norwegian Institute for Air Research). Data are first interpolated at isentropic levels and on the fine MIMOSA grid. PV fields are either extracted from the data base or computed internally.

2.1 Advection and regridding

The model starts from the ECMWF PV field interpolated on the MIMOSA orthogonal grid. The PV of each grid point is advected using ECMWF winds. We have to keep in mind that the quantity advected by the model is not the true dynamical PV but a “quasi-passive PV” which correlates well with the concentration of ozone or others long-lived trace species in the lower stratosphere. In particular, the true PV is probably poorly conserved in small-scale filaments due to radiative and dynamical processes. In order to avoid confusion, we will call the quantity advected by MIMOSA “advected potential vorticity” (APV) in the continuation of the paper.

If we consider a square formed by 4 adjacent grid points at the initial time, this square is stretched and deformed by horizontal gradients in the wind field. After a given time, it is necessary to re-interpolate the APV field to the

original grid in order to keep the distance between two adjacent points approximatively constant. A time interval of 6 hours has been chosen between two successive regriddings. For this time interval, the average change of the distance between 2 adjacent grid points ranges from 10% to 15% in the region between 400 and 675 K potential temperature. The regridding process produces a numerical diffusion as explained in Annex 1. If a bilinear interpolation is used, the equivalent numerical diffusivity is equal to $5280 \text{ m}^2\text{s}^{-1}$ for the nominal horizontal resolution $\Delta x = 37 \text{ km}$. In order to minimize the numerical diffusion, an interpolation scheme, based on the preservation of the second order momentum of a PV perturbation, has been implemented. It limits the effect of numerical diffusivity to $1350 \text{ m}^2\text{s}^{-1}$ (Annex 1). This value is close to the value of $1000 \text{ m}^2\text{s}^{-1}$ estimated by *Waugh et al.* [1997] by tracer-tracer scatter plots from aircraft data or to the upper limit deduced from the vertical diffusion $0.01 \text{ m}^2\text{s}^{-1}$ obtained by *Balluch and Haynes* [1997] using aircraft data and an aspect ratio 300 between horizontal and vertical structures ($k_{xx} = 0.01 * 300^2 = 900 \text{ m}^2\text{s}^{-1}$).

2.3 Relaxation

In the lower stratosphere PV is assumed to be conserved on isentropic surfaces for periods of 1 to 2 weeks [Orsolini, 1995]. This is particularly well verified at levels 475K and below where the diabatic cooling of the potential temperature in the winter polar vortex is less than 1K/day [Knudsen and Carver, 1994]. For periods longer than 2 weeks, the diabatic transport across isentropic surfaces due to radiative cooling and warming of air as well as the diabatic advection term in the PV equation have to be taken into account. See *Haynes and McIntyre* [1990] for further discussion on PV conservation. The information on diabatic changes in the PV field, at least for larger scales, can be extracted from ECMWF fields. In MIMOSA this is made by applying to the APV field a relaxation toward the ECMWF PV field with a time constant of 10 days. In order to preserve the filamentation structure, the relaxation term is only applied to scales larger than 300 km. To do that, both MIMOSA and ECMWF

fields are smoothed to the same resolution and the difference between the two fields is used to compute the relaxation term. Using this procedure, it is possible to run continuously the model and to follow the evolution of filaments during several months, for instance from November to April for the study of the filamentation and the final break up of the Arctic vortex.

2.4 THESEO-THESEO 2000 campaigns

During the 3 winters of THESEO and SOLVE-THESEO 2000 campaigns, 1997/1998 to 1999/2000, the model ran in real time for measurement alerts to be sent to the ground-based network of ozone lidar and to ozonesonde stations and for the planning of airborne lidar flights. The model started on 1st November and ran continuously until the end of April. 5 days forecasts of ECMWF winds were used to create predicted maps of filaments accessible in real time on the Web for the participants to the campaign.

3. Sensitivity tests

At the beginning of December 1997, a large filament developed above Western Europe and the ozone lidar profile at OHP detected a layer of high ozone concentration during the night from 4th to 5th December peaking around 445 K [Godin *et al.*, 2001], which indicates the presence of air of polar origin above the lidar station. Due to the subsidence in the polar vortex and in absence of chemical destruction, as it is the case at the beginning of the winter, the ozone mixing ratio in the lower stratosphere is higher in the polar vortex than outside below the altitude of maximum mixing ratio (about 550K). Godin *et al.* [2001] present a statistical study showing the good correlation between the detection of polar ozone laminae by the OHP ozone lidar and the passage of polar filaments simulated by MIMOSA. Figure 1 shows the filament simulated by MIMOSA at 460 K for 5th December, 00 UT, and Figure 2 shows its latitude-potential temperature cross-section at the longitude of the station. At OHP, the level of maximum

mixing ratio is slightly shifted from 445K in the lidar profile to 460K in MIMOSA. Taking into account the large slope in the filament level with latitude, this can be explained by an error of less than 1° in latitude in the prediction by MIMOSA of the filament location. The 1° error is in good agreement with the estimation of the accuracy on the filament location simulated with contour advection codes by comparison with airborne ozone lidar observations [Flentje *et al.*, 2000; Heese *et al.*, 2001]. In order to confirm this estimation, we performed a sensitivity study on the accuracy of the results MIMOSA with a series of runs of the model in which 1 or 2 parameters were changed.

For this study, the period from the 2nd to 6th December 1997, corresponding to the development of the large filament observed at OHP, was chosen as the reference period and the zone delimited by 40°N , 55°N , 30°W and 30°E was selected to evaluate the results. Table 1 gives the list of runs with the summary of their characteristics. Run1 is taken as a reference for the comparison with other. Run1 is made using 6 hours, 1.125° ECMWF data at 475K without time interpolation of the wind field. Every 6 hours and for each run from 2 to 12, the APV field is shifted in the main direction of APV contour lines and perpendicular to these contour lines until the highest correlation coefficient with the APV field in the reference run is found. In run 2, the wind field is linearly interpolated in time. The effect in the location of APV structures is very small. In runs 3 and 4, ECMWF data are taken every 12 hours. This introduces an error in the position of APV, defined as the rms displacement compared to the position in the reference run, of 250 km parallel to APV contours and 70-75 km perpendicular to contours. We have to keep in mind that the error parallel to contours is not very inconvenient because it does not correspond to an error in APV value for a given location. We will concentrate on the error perpendicular to contours. In run 5 and 6, ECMWF data are only taken every 24 hours. The perpendicular error is 130 km without time interpolation but it is decreased down to 60 km with time interpolation. Run 8 and 9 are made respectively with a relaxation towards the large scale component of ECMWF PV field with a time constant of respectively 5 and 20 days instead of 10 days in the reference run. The effect on the location of filaments is quite small (10 to 20 km). In run 10, the resolution of ECMWF data is

decreased by a factor of 2 with a small impact on the location of APV structures. In run 11 and 12, a constant bias of 1 ms^{-1} along wind direction and 0.2 ms^{-1} perpendicular to wind direction is assumed in the ECMWF wind, in order to mimic the results of *Knudsen et al.* [2000] who found an average random error on calculated trajectories of Infra-Red Montgolfier balloons, flown in the Arctic vortex in 1997 and 1999, of 500 to 1000 km along the trajectory and less than 200 km cross-trajectory after 10 days of flight. The resulting errors are respectively 95 and 80 km in the location of APV filaments.

4. Effective diffusivity

4.1 Determination of effective diffusivity

If we assume that diabatic processes can be neglected, the 2D distribution of a tracer on an isentropic surface is controlled by the horizontal motions on this surface. Following *Nakamura* [1996] it is possible to define an area coordinate system where $A(q, t)$ represents the area of tracer concentration greater than q at time t . In this coordinate system, the evolution of the tracer distribution $q(A, t)$ is controlled by the diffusion across tracer contour lines and, if we assume a constant local coefficient of diffusion k , it is governed by a diffusion equation :

$$\frac{dq}{dt} = k \frac{d}{dA} \left[L_e^2 \frac{dq}{dA} \right] \quad (1)$$

where L_e is the equivalent length of the tracer contour defined by (Nakamura, 1996):

$$L_e^2(A, t) = \frac{\partial}{\partial A} \iint_{A(q)} |\nabla q|^2 dA \bigg/ \left(\frac{\partial q}{\partial A} \right)^2 \quad (2)$$

It can be easily shown that L_e is always longer than the actual length of the tracer contour [Haynes and Shuckburgh, 2000a]. The 2 lengths are equal only if the gradient of tracer is constant along the contour line. Using

this formulation, the effective diffusivity, i.e. the diffusivity to be applied in the diffusion equation written in equivalent latitude Φ_e , is related to the local diffusivity by:

$$k_{eff} = k \frac{r^2 L_e^2}{(2pr \cos(\mathbf{f}_e))^2} \quad (3)$$

It means that, when contour lines are elongated, for instance due to the formation of filaments, the effective diffusivity is enhanced proportionally to the square of the filaments length.

Using the definition of the effective diffusivity, the diffusion equation for the tracer distribution is expressed [Haynes and Shuckburgh, 2000a]:

$$\frac{\partial C(\mathbf{f}_e, t)}{\partial t} = \frac{1}{r^2 \cos(\mathbf{f}_e)} \frac{\partial}{\partial \mathbf{f}_e} \left[k_{eff}(\mathbf{f}_e, t) \cos(\mathbf{f}_e) \frac{\partial C(\mathbf{f}_e, t)}{\partial \mathbf{f}_e} \right] \quad (4)$$

The effective diffusivity diagnostic has been applied by Haynes and Shuckburgh [2000a ; b] to a tracer advected by observed winds in the stratosphere (400-850 K) and in the upper troposphere lower stratosphere (300-450K). They found that effective diffusivity was a very efficient tool to identify barriers to transport and mixing regions, and to follow their seasonal evolution. In the second paper, they showed also examples of effective diffusivity applied to potential vorticity field calculated directly from meteorological data. If we consider the mixing of tracers in the lower-middle stratosphere, we may expect that APV fields obtained using a high resolution transport models are more representative of the true tracer fields than PV fields computed from meteorological data, especially at smaller scales where the PV is not fully conserved and where the mixing takes place. It is then anticipated that the effective diffusivity diagnostic should work better to estimate the mixing of tracers with high resolution APV fields than with PV fields derived from meteorological analyses.

In order to study the permeability of the vortex edge, the effective diffusivity has been computed at 5 isentropic levels, 400 K, 435 K, 475 K, 550 K and 675 K for the 4 winters 1996/1997 to 1999/2000. Daily maps of APV

have been computed at a resolution of $1/3^{\text{rd}}$ of degree in latitude and longitude from 30°N to 90°N and from 1st December to 30th April. The model was initialized on 1st November in order to have already a good representation of the filamentary structure at the beginning of the study period. For each grid point, the equivalent latitude is determined and rounded to the nearest latitude degree and APV gradients are computed. Then, the equivalent length is computed by summing the expression under the integral on all grid points with the same equivalent latitude. For consistency, the local diffusivity assumed for the computation of the effective diffusivity is the same than the numerical diffusivity estimated in the corresponding MIMOSA run, $1350 \text{ m}^2 \text{ s}^{-1}$ in the standard case.

4.2 Evolution of the effective diffusivity during winters 1996/97 and 1999/2000

The stratospheric meteorology was very different during the 4 winters. Winters 1996/97 and 1999/2000 were characterized by cold temperatures and a stable vortex. However, the temporal evolution of the stratospheric temperature was not the same during these two winters. In 1996/97, the vortex was relatively warm in November and December and cold temperatures were observed very late until mid-April [*Naujokat*, 1999]. On the contrary, in 1999/2000, cold temperatures started as early as late November but a stratospheric warming occurred in March [*Manney and Sabutis*, 2000]. Plots 1 to 5 present the evolution of the effective diffusivity during the 4 winters at levels 400 K, 435 K, 475 K, 550 K and 675 K. If we consider first the 475 K level (Plate 3), the 2 cold winters are characterized by very low values of effective diffusivity in the latitude band 58°N and 72°N . However the period when these low values were reached is shifted by at least 1 month, from early January to mid March in 1996/1997 and from early December to early March in 1999/2000. This time evolution is in very good agreement with the evolution the temperature in the vortex. This is not surprising because both the temperature in the vortex and the effective diffusivity are increased when planetary waves break and a stratospheric warming occurs. The two other winters, 1997/1998 and 1998/1999, are characterized by a warm and dynamically disturbed vortex. In 1997/1998 a strong minor warming occurred in January and after that the vortex reformed but with a reduced size and the region

of low effective diffusivity is limited southwards to 65°N. In 1998/1999 a major warming occurred in late December and the region of low effective diffusivity disappeared in January. It formed again in February but it was destroyed by the final warming in March. At 435 K (Plate 2), the evolution is in general very similar but with larger values of effective diffusivity, indicating that the permeability of the vortex edge is stronger. In January 2000, the area of low values was limited northwards to 66°N instead of 72°N at 475 K and more mixing took place inside the vortex. At 550 K and 675 K (Plates 4 and 5), lowest values were observed, showing a strongest isolation of the vortex. This is particularly true at the beginning of the winter. For instance, in 1996-1997, the vortex isolation started around mid-December at 675 K, at least 1 month earlier than at 475 K. At 400 K (Plate 1) the vortex is much less isolated and a significant mixing between high and middle latitudes takes place almost all the time, except in March-April 1997 where the isolation of the vortex extended down to this level. This is probably related to the very long duration of the stable vortex which allowed the diabatic descent of the bottom of the vortex down to 400 K.

For winters 1996-1997 and 1997-1998, it is possible to compare our results on with those of *Haynes and Shuckburgh* [2000a] who presented on Plate 4 the evolution of effective diffusivity at 400 K, 450 K, 550 K and 850 K from December 1996 to May 1998. A direct comparison can be made at 400 K and 550 K and their 450 K level can be compared to our 435 K and 475 K levels. The results on the temporal evolution of the effective diffusivity are in good agreement, even for some small details. At 450 K and 550 K they found the same difference between winter 1996-1997 with a strong isolation of the vortex and winter 1997-1998 with a less isolated and smaller vortex. They found that the lower limit of the polar vortex barrier occurs somewhere between 400 K and 450 K, except in March-April 1997 where the polar barrier extends down to 400 K, in agreement with our results. The use of a high resolution advection model to compute the effective diffusivity allows us to have a much smaller local diffusivity, in the order of $10^3 \text{ m}^2 \text{ s}^{-1}$ than when a conventional spectral model is used for the advection of tracer as in *Haynes and Shuckburgh* [2000a; b] where the local diffusivity is 2 order of magnitude larger, in the order of

$10^5 \text{ m}^2 \text{ s}^{-1}$, for a T85 spectral resolution of the model. In our study, the contrast between the minimum of effective diffusivity in the polar barrier and the maximum in the surf zone can be as high as 300, when it is limited to about 20 in their study.

5 Quantification of the transport from the polar vortex to mid-latitude

The use of effective diffusivity allows us to quantify the horizontal transport on an isentropic surface in a 1D coordinate system defined by the equivalent latitude Φ_e . In this coordinate system, the temporal evolution of a tracer of which the mixing ratio is depending only on Φ_e is controlled by the diffusion Equation 4. In order to quantify the transport from the polar vortex to mid-latitude occurring during each winter, a polar tracer was initialized to 1 on 1st January of each year, inside the polar vortex, defined as $\Phi_e > 65^\circ\text{N}$, and to 0 outside. The equivalent latitude of the vortex edge was estimated using the *Nash et al.* [1996] method on MIMOSA-generated APV fields when the vortex is well formed. To facilitate comparisons, the same limit is taken for each year even if they exist an interannual variability on the position of the vortex edge. The starting date was chosen in order to have a polar vortex already well defined in most of the cases. The evolution of the polar tracer was computed for the 4 winters and at the 4 isentropic levels 435 K, 475 K, 550 K and 675 K. The 400 K level is not considered because at this level the polar vortex is in general not clearly defined. 3 regions are considered according to the average equivalent latitude of the vortex edge, inside vortex ($\Phi_e > 65^\circ\text{N}$), vortex edge ($60^\circ\text{N} < \Phi_e < 65^\circ\text{N}$) and outside vortex ($\Phi_e < 60^\circ\text{N}$). The vertical motion of air across isentropic surfaces due to diabatic effects is not taken into account in this study. An air parcel inside the vortex experiences a diabatic descent which increases with height and is maximum at the beginning of the winter. Using the radiative code of SLIMCAT model, *Rex et al.* [2001] estimated the evolution of the potential temperature of an air parcel in winter 1999-2000. They found that polar air parcels at 400 K, 435 K and

475 K on 31st March were respectively at 415 K, 460 K and 550 K on 1st January. The transport computed at a given isentropic level will not concern the same polar air mass at the beginning and at the end of the winter. Therefore, our results concerning the cumulative transport during the winter will have to be interpreted with caution. However, we think that they give a good estimation of the transport taking place across the vortex edge and a clear description of its altitude and temporal dependence.

The appropriate value of the diffusivity k to be used to represent the real atmosphere is quite uncertain. In order to test the sensitivity of the results to the assumed value for k , 2 additional runs of the advection model were made for winter 1999-2000 at 475 K, one with a higher resolution (28 km instead of 37 km in the standard case) corresponding to a lower numerical diffusivity ($760 \text{ m}^2\text{s}^{-1}$ instead of $1350 \text{ m}^2\text{s}^{-1}$) and one with a coarser resolution (56 km) and higher numerical diffusivity ($3040 \text{ m}^2\text{s}^{-1}$). For consistency, the value of the diffusivity used for the estimation of the meridional transport in Equation 4 is taken equal to the corresponding numerical diffusivity in MIMOSA code. The evolution of the proportion of polar tracer in the 3 regions (Figure 3) is not very different between the 3 runs. The cumulative transport of air during the winter is only increased by less than 30%, from 30% of polar vortex area in the low diffusivity case to 38% in the high diffusivity case, when the local diffusivity is increased by a factor of 4. In the same time, the proportion of polar tracer staying in the vortex is decreased from 50% to 42%. This result may seem surprising but can be explained by the fact that, when the local diffusivity k increases, the equivalent length of tracer contour lines L_e decreases and the 2 terms in Equation 3 compensate partially. The deformation of the vortex edge by breaking of large scale Rossby waves brings filaments or bubbles of polar vortex air to mid-latitude. The local diffusivity controls the rate at which the polar air is irreversibly mixed with the surrounding mid-latitude air but the mixing will finally occur even if the local diffusivity is very small. Therefore, the estimation of the meridional transport is not too sensitive to the uncertainty in the local diffusivity.

The evolution of the proportion of polar tracer at mid-latitude during the 4 winters and at the 5 isentropic levels is presented on Figure 4. In all cases the transport is maximum at the lower level 435 K, where the isolation of the polar vortex is weaker (see section 4) and decreases with height up to 550 K. At 675 K the transport is stronger or weaker than at 550 K depending on the year and on the period in the winter. The interannual variability observed in the effective diffusivity is also visible in the meridional transport. During periods with a very cold and isolated vortex, from January to April 1997 and from January to March 2000, the transport is very weak. During a stratospheric warming event, like in March 1999, or during the final break up of the vortex, as in April 2000, 20% to 30% of the polar tracer is transported to mid-latitude at all levels. When the vortex is relatively disturbed, as in 1998, a significant amount of the polar tracer is also transported at all levels all along the winter. The cumulative transport from 1st January to the end of April is very variable from one winter to another. It is maximum during the very warm and disturbed winter 1999 (between 30% at 550 K and 675 K and 50 % at 435 K) and minimum during the very cold winter 1997 (between 5% at 675 K and 12 % at 435 K). The large interannual variability in the transport of activated polar air to mid-latitudes was shown by *Norton and Chipperfield* [1995] using an off-line Chemistry Transport Model and a contour advection code. On the 475 K isentropic surface, they found that 10% of the total vortex mass was transported in 1991-1992 and 50% in 1993-1994. *Knudsen and Gross* [2000] used reverse domain filling trajectories to estimate the dilution of the polar vortex to mid-latitude in April-May 1997. They found that 40% of the observed ozone decline at mid-latitude can be explained by the dilution of ozone depleted polar air. If we consider that the transport was very weak in April (Figure 4), most of the dilution should have occurred in May during the final break up of the vortex. This is consistent with Figure 1 of their paper showing the temporal development of the dilution.

6. Summary

A high resolution advection model MIMOSA has been developed in the frame of the METRO-THESEO project for analysis and forecast of polar filamentation. In early December 1997, a large polar filament developed above Europe and North Atlantic. It allowed us to evaluate the accuracy in the location of PV filaments simulated by MIMOSA as a function of several parameters. In all cases but one, the one with low time resolution in the wind data and no time interpolation, the location of filaments was estimated with an accuracy in the order or better than 100 km, in good agreement with comparisons made between airborne lidar observations and contour advection simulations [Flentje *et al.*, 2000; Heese and *al.*, 2001]. The strongest error in the location of filament is found when we assume a constant bias in the speed of ECMWF advecting wind.

A second order interpolation scheme has been developed to limit the numerical horizontal diffusivity induced by regridding of the APV field to values in the order of $10^3 \text{ m}^2 \text{ s}^{-1}$, comparable to the estimation of the local horizontal diffusivity from high resolution aircraft data [Vaugh *et al.*, 1997; Balluch and Haynes, 1997]. This allowed us to use MIMOSA model to estimate the effective diffusivity as a function of the equivalent latitude and the transport of polar air to mid-latitude during the 4 winters 1996-1997 to 1999-2000 at 5 isentropic levels from 400 K to 675 K. The effective diffusivity diagnostic is particularly well adapted to high resolution advected PV fields. The contrast between dynamical barrier (polar edge) and mixing regions (mid-latitude surf zone) is enhanced by the use of a high resolution advection model.

A large year to year variability is found in the effective diffusivity around the polar edge and in the transport of air from the polar vortex to mid-latitudes. The effective diffusivity decreases with altitude between 400 K and 550 K and is nearly constant between 550 K and 675 K. At 400 K, the polar barrier is poorly defined and the mixing between polar and mid-latitude air occurs almost all the time. At higher levels, most of the transport occurs during stratospheric warmings periods when the vortex breaks up (see also Vaugh *et al.* [1994] for an estimation of the

transport during Rossby wave breaking). When the vortex is cold and stable, condition favorable to the formation of polar stratospheric clouds and chlorine activation, the transport from the polar vortex to mid-latitudes is very weak. This result suggests that the irreversible mid-winter transport of ozone depleted air to mid-latitudes in polar filaments plays a minor role in the observed decline of ozone at mid-latitude. However, this does not exclude a contribution to this decline of polar air excursion above mid-latitude stations as discussed by *Godin et al.* [2001]. At a given isentropic level; the cumulative transport from the polar vortex to mid-latitude from early January to end of April varies from 5% of the polar vortex area at 675 K in 1997, when the vortex was very stable, to 50 % at 435 K during the very disturbed winter 1999. It is interesting to note that the estimation of the transport using the effective diffusivity is only slightly sensitive to the value of the assumed for the local diffusivity. An increase of the local diffusivity by a factor 4 induces an increase of the exportation of polar air by less than 30%. This can be explained by the fact that, when some filaments or bubbles of polar vortex air are transported to mid-latitude by breaking of large scale Rossby waves, they will be finally mixed with the surrounding mid-latitude air even if the local diffusivity is very small. Therefore, the estimation of the meridional transport is quite accurate in spite of the large uncertainty on the local diffusivity in the real atmosphere.

Acknowledgments Thanks to ECMWF and NILU for providing meteorological data. This work has been supported by European Commission, Environment and Climate Programme.

Annex 1: Regridding scheme and numerical diffusion

Due to the finite resolution of the advection model, the process of regridding induces some numerical diffusion. Two scheme of regridding were developed in MIMOSA. The first one is a bilinear interpolation. A grid point $(x_{i,j}, y_{i,j})$ of the orthogonal grid at which we want to interpolate the advected PV field is included inside a quadrangle on the advected grid, resulting from the advection of an elementary square of the grid, delimited by the 4 advected grid points:

$$(x'_{i',j'}, y'_{i',j'}), (x'_{i'+1,j'}, y'_{i'+1,j'}), (x'_{i'+1,j'+1}, y'_{i'+1,j'+1}) \text{ and } (x'_{i',j'+1}, y'_{i',j'+1}).$$

Using an iteration algorithm, it is possible to determine the reduced coordinates (X, Y) of the grid point $(x_{i,j}, y_{i,j})$ in the advected quadrangle with $0 \leq X \leq 1$ and $0 \leq Y \leq 1$ such as :

$$\begin{aligned} x_{i,j} &= (1-X)(1-Y)x'_{i',j'} + X(1-Y)x'_{i'+1,j'} + (1-X)Yx'_{i',j'+1} + XYx'_{i'+1,j'+1} \\ y_{i,j} &= (1-X)(1-Y)y'_{i',j'} + X(1-Y)y'_{i'+1,j'} + (1-X)Yy'_{i',j'+1} + XYy'_{i'+1,j'+1} \end{aligned} \quad (A1)$$

and the regridded value of an advected quantity Q (for instance the advected PV) is given by :

$$Q_{i,j} = (1-X)(1-Y)Q'_{i',j'} + X(1-Y)Q'_{i'+1,j'} + (1-X)YQ'_{i',j'+1} + XYQ'_{i'+1,j'+1} \quad (A2)$$

The numerical diffusivity induced by this scheme can be estimated by looking at the diffusion of a Dirac function during the regridding process. For simplification, the demonstration is limited to the x dimension. Equation A2 is written:

$$Q_i = (1-X)Q'_{i'} + XQ'_{i'+1} \quad (A3)$$

The Dirac function is defined as:

$$Q'_{i_0} = 1, Q'_i = 0 \text{ for } i \neq i_0$$

$$\frac{x'_{i_0} - x_{i1}}{x_{i1+1} - x_{i1}} = X$$

The second order momentum M_2 of the perturbation in the x direction is equal to 0 before regridding and takes a value after regridding equal to:

$$M_2 = \left[X^2 (1 - X) + (1 - X)^2 X \right] \Delta x^2 \quad (\text{A4})$$

where Δx is the grid size.

If we average over all possible X values in the domain $0 \leq X \leq 1$ and $0 \leq Y \leq 1$, we obtain

$$\overline{M_2} = \int_0^1 \left[X^2 (1 - X) + (1 - X)^2 X \right] dX \Delta x^2 = \frac{\Delta x^2}{6} \quad (\text{A4})$$

We consider now a normalized perturbation $p(x)$ in the x direction centered at 0 at which we apply the diffusion equation with a constant diffusivity k . The function $p(x)$ is defined as:

$$\begin{aligned} p(x), \frac{dp}{dx}, \frac{d^2 p}{dx^2} &= 0 \text{ for } |x| \geq x_{\max} \\ \int_{-x_{\max}}^{x_{\max}} p(x) dx &= 1, \int_{-x_{\max}}^{x_{\max}} x p(x) dx = 0 \end{aligned} \quad (\text{A5})$$

The time derivative of its second order momentum is expressed as:

$$\begin{aligned} \frac{dM_2}{dt} &= \frac{d}{dt} \int_{-x_{\max}}^{x_{\max}} x^2 p(x) dx \\ &= k \int_{-x_{\max}}^{x_{\max}} x^2 \frac{d^2 p}{dx^2} dx = k \left[x^2 \frac{dp}{dx} \right]_{-x_{\max}}^{x_{\max}} - 2k \int_{-x_{\max}}^{x_{\max}} x \frac{dp}{dx} dx \\ &= k \left[x^2 \frac{dp}{dx} \right]_{-x_{\max}}^{x_{\max}} - 2k [xp(x)]_{-x_{\max}}^{x_{\max}} + 2k \int_{-x_{\max}}^{x_{\max}} p(x) dx = 2k \end{aligned} \quad (\text{A6})$$

The diffusivity induced by the regridding is estimated assuming that the increase of $\overline{M_2}$ during a time step Δt between 2 regriddings (Equation 4) is equal to the time derivative of M_2 (Equation 6) multiplied by the time step:

$$k = D_{xx} = D_{yy} = \frac{\Delta x^2}{12 \Delta t} \quad (\text{A7})$$

This gives $D_{xx} = 1320 \text{ m}^2 \text{ s}^{-1}$ for $Dx = 18.5$ km (6 grid points/degree) and $D_{xx} = 5280 \text{ m}^2 \text{ s}^{-1}$ for $Dx = 37$ km (3 grid points/degree).

In order to reduce the numerical diffusivity, a “second order” scheme has been developed based on the conservation of the second order momentum of the shape of a perturbation. The scheme is described only along the direction x for simplification but is applied in both directions in the model. The reduction of the diffusion is obtained by computing the regridded value Q as a linear combination of advected values Q' at advected grid points x'_{i-1} , x'_i , x'_{i+1} , and x'_{i+2} , with a small negative weight given at the external grid points :

$$Q_i = -\frac{X(X-1)(X-2)}{6} Q'_{i-1} + \frac{X(X-1)(X-2)}{6} Q'_i - \frac{X(X-2)(X+1)}{6} Q'_{i+1} + \frac{X(X-1)(X+1)}{6} Q'_{i+2} \quad (\text{A4})$$

with $0 \leq X \leq 1$. In the model, the interpolation is made on both directions and $Q_{i,j}$ is expressed as a summation of Q' over 16 advected grid points, each grid point being weighted by the product of a term in X and a term in Y .

Due to the finite resolution of the model, the numerical diffusion is not totally suppressed. In order to estimate the residual diffusivity, 1D Fourier transform spectra of APV fields have been made in x and y directions and the mean power spectral density at the smaller scale resolved by the model (horizontal wavelength = $2Dx$) has been computed for both advection schemes at various horizontal resolutions. It has been found that the numerical diffusivity using the second order scheme and $Dx=37$ km is about $1350 \text{ m}^2 \text{ s}^{-1}$, almost equivalent to the numerical diffusivity using the bilinear interpolation and $Dx=18.5$ km.

References

- Balluch M. G. and P. H. Haynes, Quantification of lower stratospheric mixing processes using aircraft data, *J. Geophys. Res.*, *102*, 23,487-23,504, 1997.
- Edouard, S., B. Legras, F. Lefèvre, and R. Eymard, The effect of small-scale inhomogeneities on ozone depletion in the Arctic, *Nature*, *384*, 444-447, 1996.
- Flentje, H., W. Renger, and W. Wirth, comparison of airborne lidar measurements with contour advection simulations, *J. Geophys. Res.*, *105*, 15,417-15,437, 2000.
- Godin S., M. Marchand, and A. Hauchecorne, Influence of the Arctic polar vortex erosion on the lower stratospheric ozone amounts at Haute-Provence Observatory (44°N, 6°E), *J. Geophys. Res.*, 2001, in press.
- Haynes, P.H., and M.E. McIntyre, On the conservation and impermeability theorems for potential vorticity, *J. Atmos. Sci.*, *47*, 2021-2031, 1990.
- Haynes, P., and E. Shuckburgh, Effective diffusivity as a diagnostic of atmospheric transport, 1. Stratosphere, *J. Geophys. Res.*, *105*, 22,777-22,794, 2000a.
- Haynes, P., and E. Shuckburgh, Effective diffusivity as a diagnostic of atmospheric transport, 1. Troposphere and lower stratosphere, *J. Geophys. Res.*, *105*, 22,795-22,810, 2000b.
- Heese, B., S. Godin and A. Hauchecorne, Heese, B., S. Godin and A. Hauchecorne, Forecast and simulation of stratospheric ozone filaments: A validation of a high resolution PV advection model by airborne ozone lidar measurements in winter 1998-1999, *J. Geophys. Res.*, *20*,011-20,024, 2001.

- Knudsen, B. M. et al., Comparison of stratospheric air parcel trajectories based on different meteorological analyses, *J. Geophys. Res.*, 2000, in press.
- Knudsen, B. M., and J.-U. Gross, Northern midlatitude stratospheric ozone dilution in spring modeled with simulated mixing, *J. Geophys. Res.*, 105, 6885-6890, 2000.
- Lait, L. R., An alternative form for potential vorticity, *J. Atmos. Sci.*, 51, 1754-1759, 1996.
- McIntyre M. E., and T. N. Palmer, The 'surf zone in the stratosphere, *J. Atm. Terr., Phys.*, 9, 825-849, 1984.
- Manney, G. L., J. C. Bird, D. P. Donovan, T. J. Duck, J. A. Whiteway, S. R. Pal, and A. I. Carswell, Modeling ozone laminae in ground-based Arctic wintertime observations using trajectory calculations and satellite data, *J. Geophys. Res.*, 103, 5797-5814, 1998.
- Manney, G. L., and J. L. Sabutis, Development of the polar vortex in the 1999-2000 Arctic winter stratosphere, *Geophys. Res. Lett.*, 27, 2589-2592, 2000
- Mariotti, A., M. Moustou, B. Legras, and H. Teitelbaum, Comparison between vertical ozone soundings and reconstructed potential vorticity maps by contour advection with surgery, *J. Geophys. Res.*, 102, 6131-6142, 1997.
- Methven, J., and B. Hoskins, The advection of high-resolution tracers by low resolution winds, *J. Atmos. Sci.*, 56, 3262-3285, 1999.
- Nakamura, N., Two-dimensional mixing, edge formation and permeability diagnosed in area coordinate, *J. Atmos. Sci.*, 53, 1524-1537, 1996.
- Nash, E.R., P.A. Newman, J.E. Rosenfield, and M.E. Schoeberl, An objective determination of the polar vortex using Ertel's potential vorticity, *J. Geophys. Res.*, 100, 25817-25840, 1995.

- Naujokat, B., The winters 1997/98 and 1998/99 in perspective, in: *Proceedings of the fifth European symposium, Saint-Jean de Luz, France, 27th September-1st October 1999, Air Pollution Research Report 73*, Harris N. R. P., M. Guirlet, and G. T. Amanatidis (ed.), European Commission, 107-110, 2000.
- Norton, W. A., and M. P. Chipperfield, Quantification of the transport of chemically activated air from the northern hemisphere polar vortex, *J. Geophys. Res.*, *100*, 25,817-25,840, 1995.
- Orsolini, Y. J., On the formation ozone laminae at the edge of the Arctic polar vortex, *Q. J. R. Meteorol. Soc.*, *121*, 1923-1941, 1995.
- Orsolini, Y. J., G. Hansen, U.-P. Hoppe, G. L. Manney, and K. H. Fricke, Dynamical modelling of wintertime lidar observations in the Arctic : ozone laminae and ozone depletion, *Q. J. R. Meteorol. Soc.*, *123*, 785-800, 1997.
- Orsolini, Y. J., G. L. Manney, A. Engel, J. Ovarlez, C. Claud, and L. Coy, Layering in stratospheric profiles of long-lived trace species: Balloon-borne observations and modeling, *J. Geophys. Res.*, *103*, 5815-5825, 1998.
- Plumb, R. A., D. W. Waugh, R. J. Atkinson, P. A. Newman, L. R. Lait, M. R. Schoeberl, E. V. Browell, A. J. Simmons, and M. Loewenstein, Intrusions into the lower stratospheric Arctic vortex during the winter of 1991-1992, *J. Geophys. Res.*, *99*, 1089-1105, 1994.
- Reid, S. J. and G. Vaughan, Lamination in ozone profiles in the lower stratosphere, *Q. J. Roy. Met. Soc.*, *117*, 825-844, 1991.
- Rex, M., et al., Chemical depletion of Arctic ozone in winter 1999/2000, JGR, submitted to the special issue on SOLVE/THESEO2000 results, submitted to *J. Geophys. Res.*, 2001.
- Scientific Assessment of Ozone Depletion: 1998, World Meteorological Organization, Global Ozone Research and Monitoring Project, Report N°44, Genève, Switzerland, 1999.

Searle, K.R., M.P. Chipperfield, S. Bekki, and J.A. Pyle, The impact of spatial averaging on calculated ozone loss –

1. Model experiments, *J. Geophys. Res.*, 103, 25397-25408, 1998.

Searle, K.R., M.P. Chipperfield, S. Bekki, and J.A. Pyle, The impact of spatial averaging on calculated ozone loss –

1. Theoretical analysis, *J. Geophys. Res.*, 103, 25409-25416, 1998.

Sparling, L.C., A.R. Douglass, and M.R. Schoeberl, An estimate of the effect of unresolved structure on modeled ozone loss from aircraft observations of ClO, *Geophys. Res. Lett.*, 25, 305-308, 1998.

Tan, D.G.H., P.H. Haynes, A.R. MacKenzie, and J.A. Pyle, Effects of fluid-dynamical stirring on the deactivation of chlorine, *J. Geophys. Res.*, 103, 1585-1605, 1998.

Waugh, D. W., R. A. Plumb, R. J. Atkinson, M. R. Schoeberl, L. R. Lait, P. A. Newman, M. Loewenstein, D. W. Toohey, L. M. Avallone, C. R. Webster, and R. D. May, Transport out of the lower stratosphere Arctic vortex by Rossby wave breaking, *J. Geophys. Res.*, 99, 1071-1088, 1994.

Waugh, D. W., R. A. Plumb, J. W. Elkins, D. W. Fahey, K. A. Boering, G. S. Dutton, C. M. Volk, E. Keim, R.-S. Gao, B. C. Daube, M. Loewenstein, J. R. Podolske, K. R. Chan, M. H. Proffitt, K. K. Kelly, P. A. Newman, and , L. R. Lait, Mixing of polar vortex air into middle latitudes as revealed by tracer-tracer scatterplots, *J. Geophys. Res.*, 102, 13119-13134, 1997.

Weaver, C. J., A. R. Douglass, and R. B. Rood, Lamination frequencies as a diagnostic for horizontal mixing in a 3D transport model, *J. Atmos. Sci.*, 57, 247-261, 2000.

Figure captions

Figure 1: Map of advected PV on 5th December at 00 U.T. at 460 K. The location of OHP station is shown. PV is units $10^{-6} \text{ Km}^2 \text{ kg}^{-1} \text{ s}^{-1}$.

Figure 2: Latitude-potential temperature cross-section of MIMOSA advected PV, corrected for vertical dependence on the increasing potential temperature with altitude [Lait, 1996], on 5th December 1997 at 00 UT at the longitude of OHP station. The latitude of OHP is 43.9°N. The reference level for Lait PV correction is 475K. PV is units $10^{-6} \text{ Km}^2 \text{ kg}^{-1} \text{ s}^{-1}$.

Figure 3: Evolution during winter 2000 of the proportion of air of polar vortex origin (equivalent latitude > 65°N) on 1st January 2000 in 3 equivalent latitude bands, Equivalent latitude > 65°N (inside), 60°N > Equivalent latitude > e) and Equivalent latitude < 60°N.

Figure 4: Proportion of air outside vortex (Equivalent latitude < 60°N) from polar vortex origin on the 1st January of the given winter at 4 isentropic levels, 435, 475, 550 and 675 K.

Plate 1: Effective diffusivity at 400 K for the 4 winters from 1996/1997 to 1999/2000 using MIMOSA advected PV maps. A logarithmic scale base 10 is used. A value 0 corresponds to the effective diffusivity equal to the local diffusivity. A value 3 corresponds to the effective diffusivity 1000 times greater.

Plate 2: As in Plate 1 but for 435 K.

Plate 3: As in Plate 1 but for 475 K.

Plate 4: As in Plate 1 but for 550 K.

Plate 5: As in Plate 1 but for 675 K.

Table 1. Sensitivity tests made with several runs of MIMOSA (see text): 1st column, run number; 2nd column, meteorological resolution; 3rd column, meteorological time step; 4th column, MIMOSA resolution; 5th column, relaxation time; 6th column, time interpolation (yes or no); 7th column, rms displacement of APV contours compared to the reference run in the direction parallel to contours; 8th column, rms displacement in the direction perpendicular to APV contours; 9th column, correlation coefficient between APV values in the current run and in the reference run, 10th column, characteristics of the run.

Run	Met. resol.	Met.. time step	MIMOSA. Resol. km	Relax. days	Time interp.	Dist paral. km	Dist perp km	Correlation /reference	Characteristics
1	1.125	6	37	10	no	0	0	1.000	Reference
2	1.125	6	37	10	yes	17	7	0.998	Time interpolation.
3	1.125	12	37	10	no	250	70	0.915	12h meteorological data.
4	1.125	12	37	10	yes	260	75	0.915	12h met + time interp.
5	1.125	24	37	10	no	350	130	0.889	24h meteorological data.
6	1.125	24	37	10	yes	280	60	0.895	24h met. + time interp.
7	1.125	6	18.5	10	no	7	3	0.999	18.5 km horiz.. resol
8	1.125	6	37	5	no	35	20	0.985	5 days relaxation
9	1.125	6	37	20	no	20	10	0.984	20 days relaxation
10	2.25	6	37	10	no	90	10	0.984	2.25° met. resol.
11	1.125	6	37	10	no	295	95	0.947	Wind error 1m/s //
12	1.125	6	37	10	no	160	80	0.966	Wind error .2m/s +

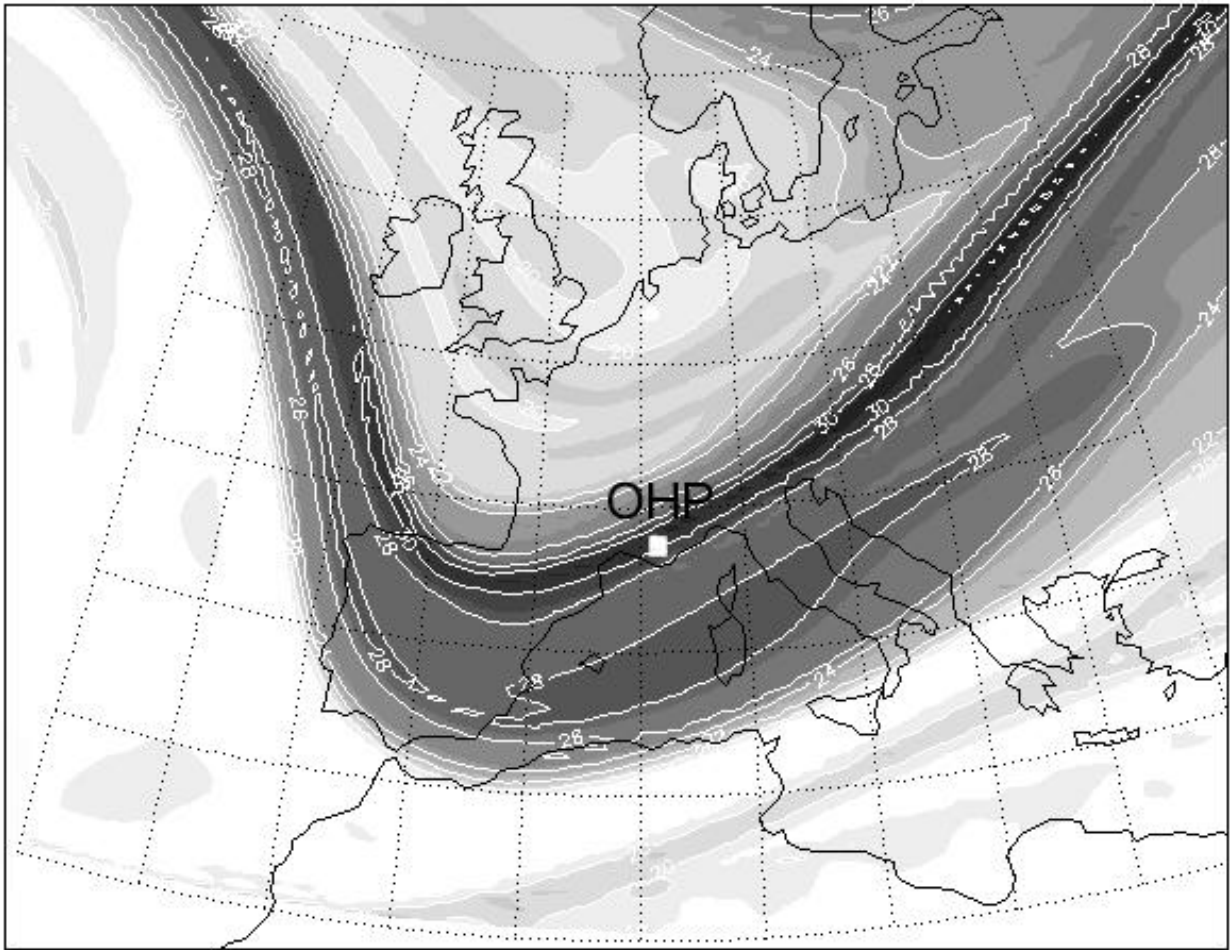


Figure 1: Map of advected PV on 5th December at 00 U.T. at 460 K. The location of OHP station is shown. PV is units $10^6 \text{ Km}^2 \text{ kg}^{-1} \text{ s}^{-1}$.

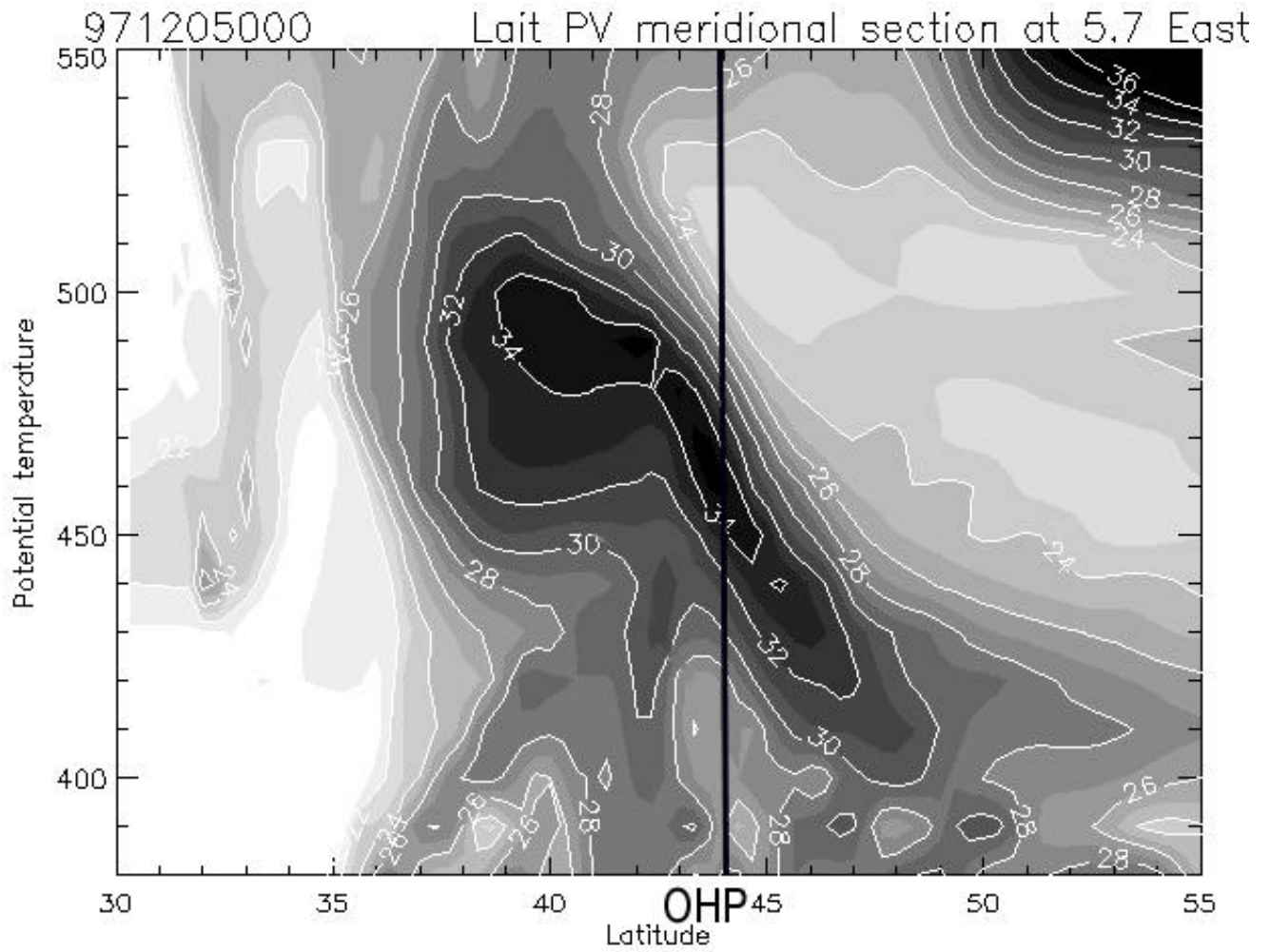


Figure 2: Latitude-potential temperature cross-section of MIMOSA advected PV, corrected for vertical dependence on the increasing potential temperature with altitude [Lait, 1996], on 5th December 1997 at 00 UT at the longitude of OHP station. The latitude of OHP is 43.9°N. The reference level for Lait PV correction is 475K. PV is units $10^{-6} \text{ Km}^2 \text{ kg}^{-1} \text{ s}^{-1}$.

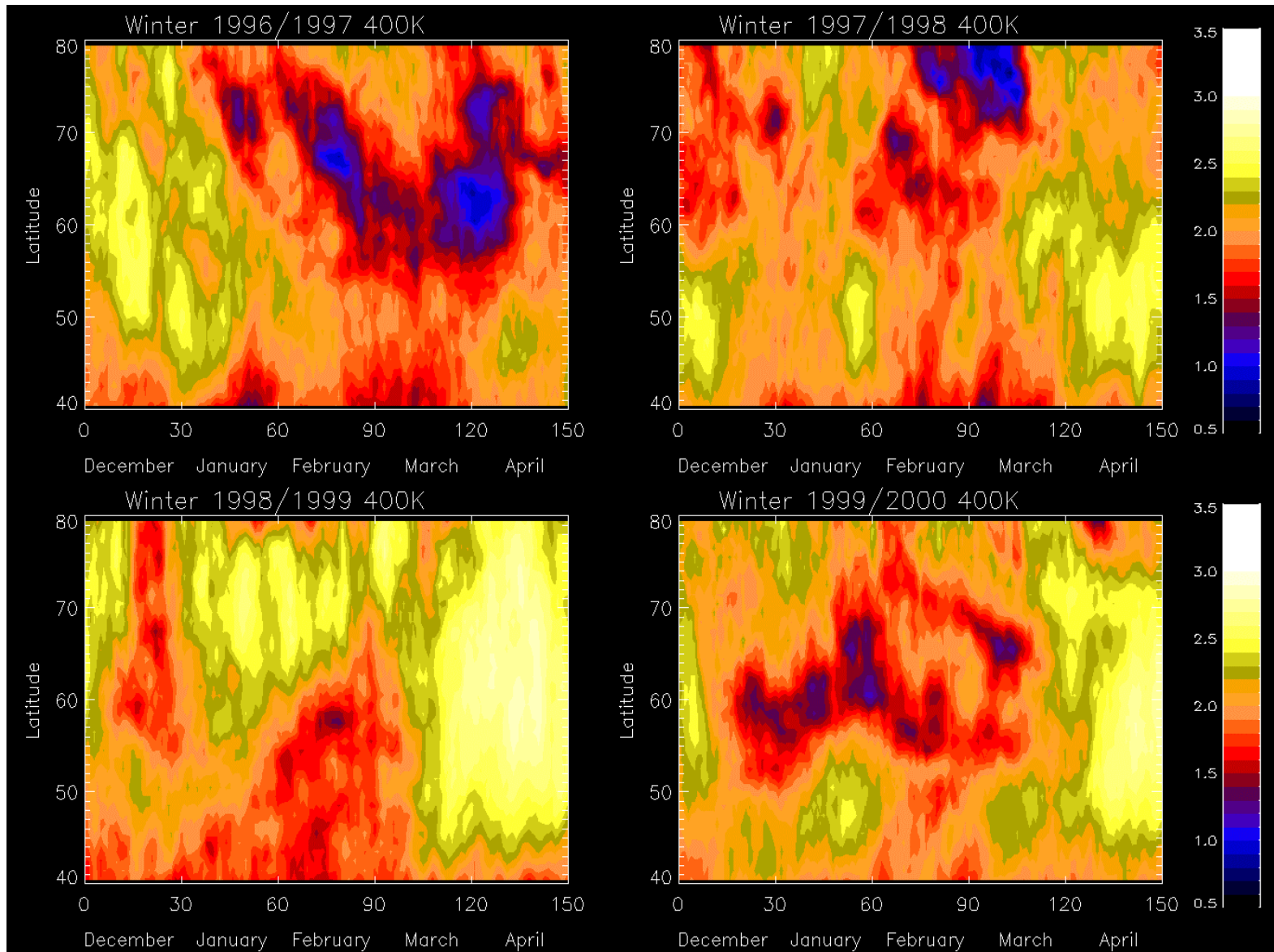


Plate 1: Effective diffusivity at 400 K for the 4 winters from 1996/1997 to 1999/2000 using MIMOSA advected PV maps. A logarithmic scale base 10 is used. A value 0 corresponds to the effective diffusivity equal to the local diffusivity. A value 3 corresponds to the effective diffusivity 1000 times greater.

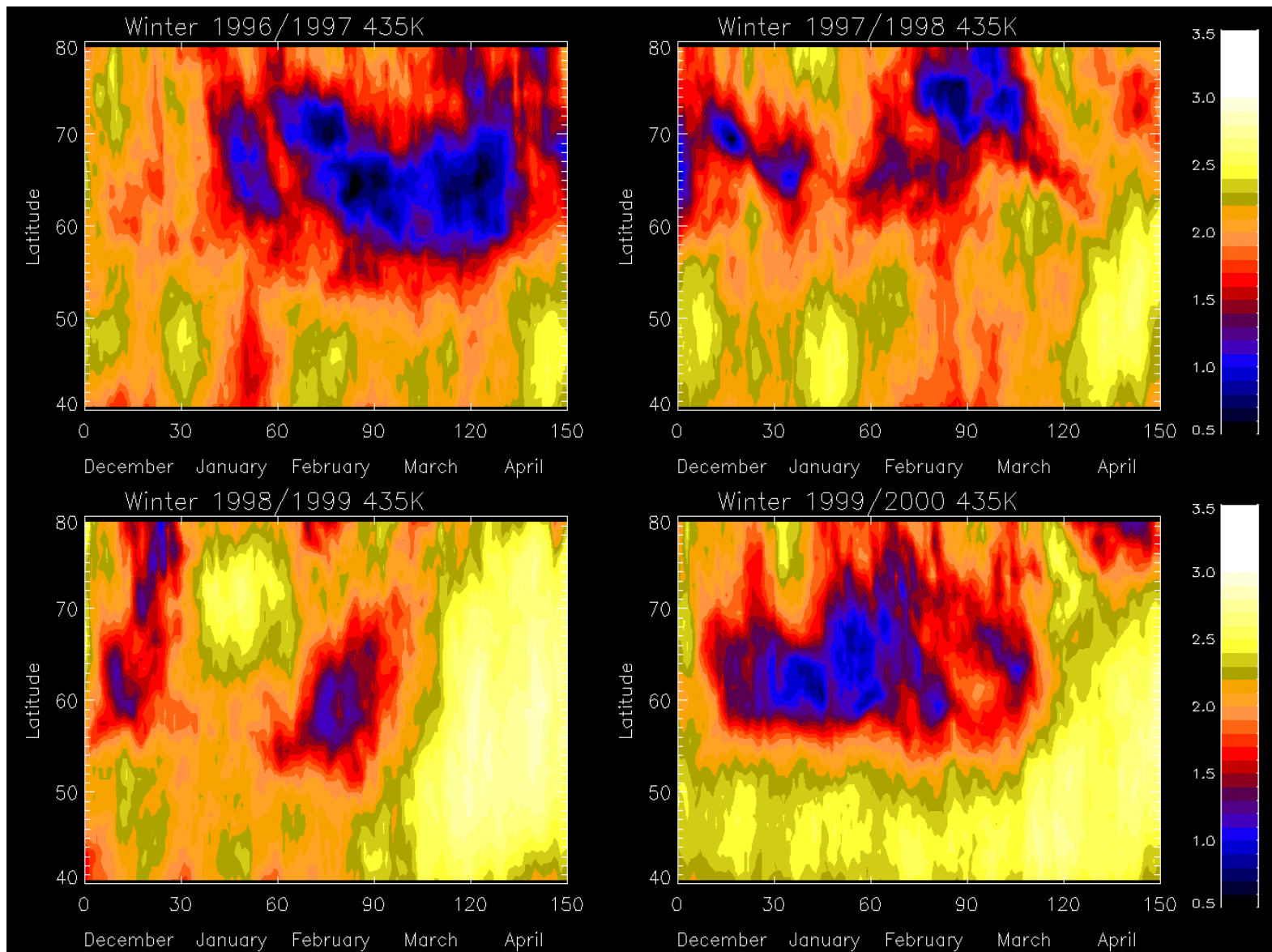


Plate 2: As in Plate 1 but for 435 K.

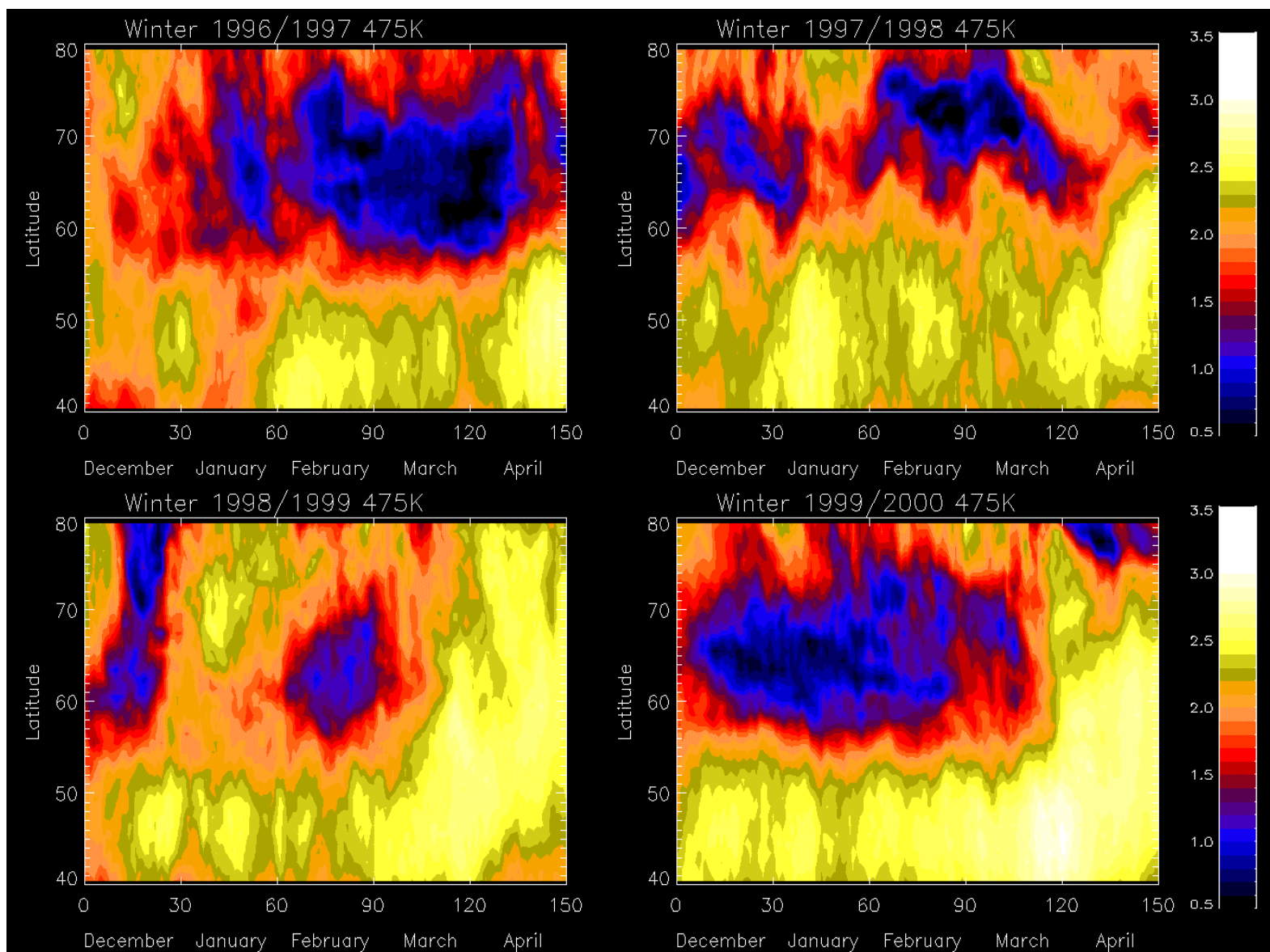


Plate 3: As in Plate 1 but for 475 K.

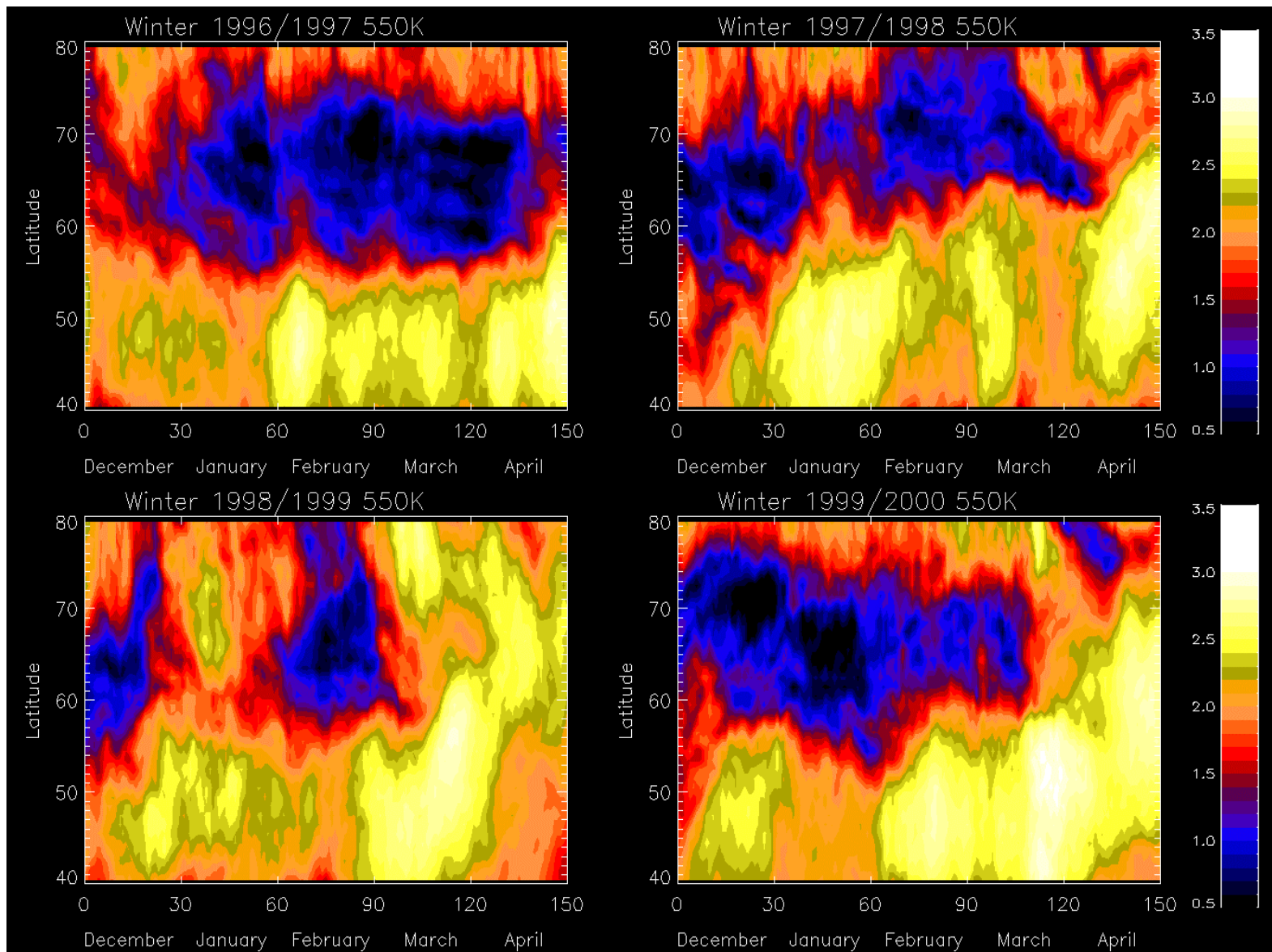


Plate 4: As in Plate 1 but for 550 K.

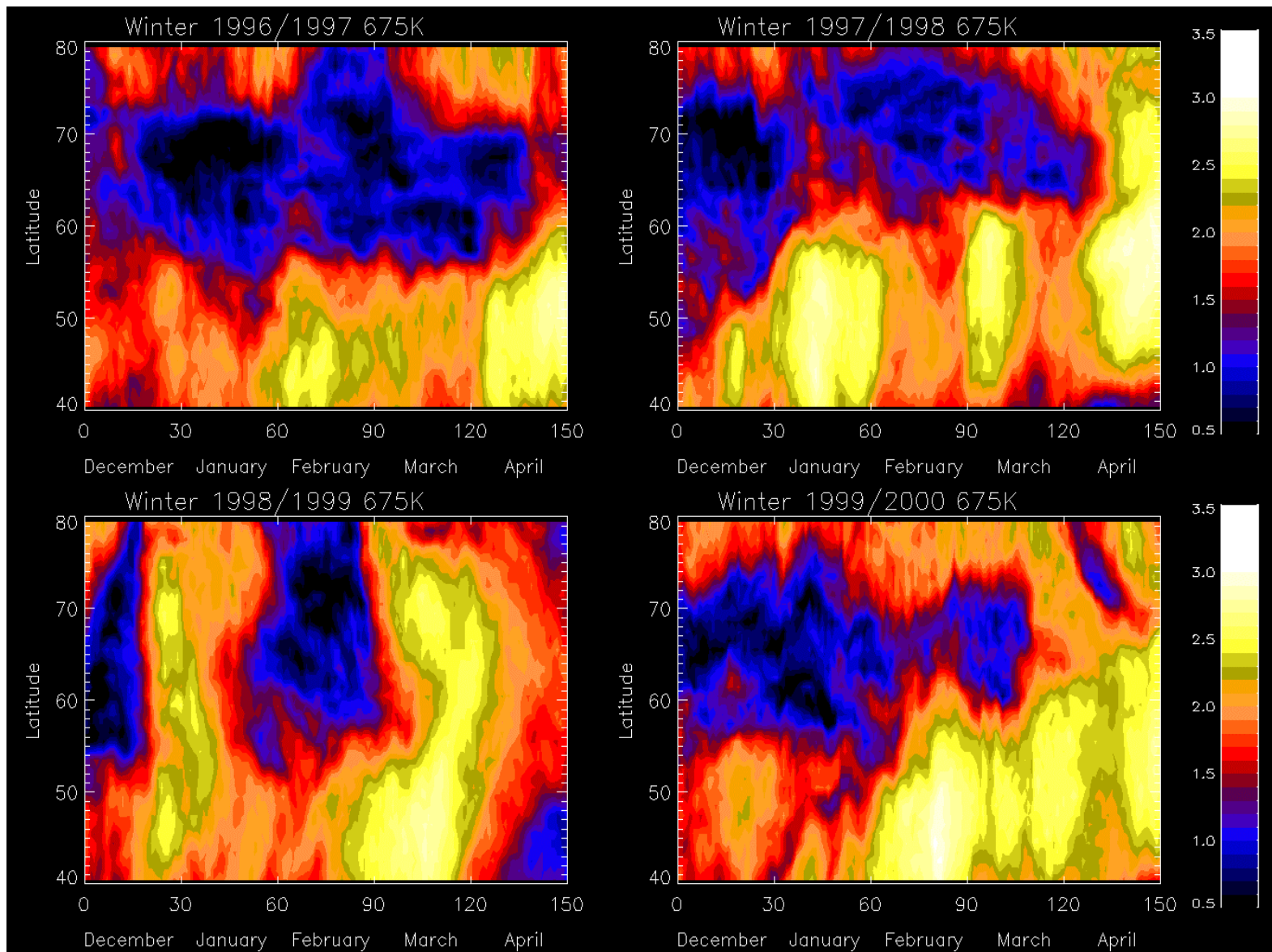


Plate 5: As in Plate 1 but for 675 K.

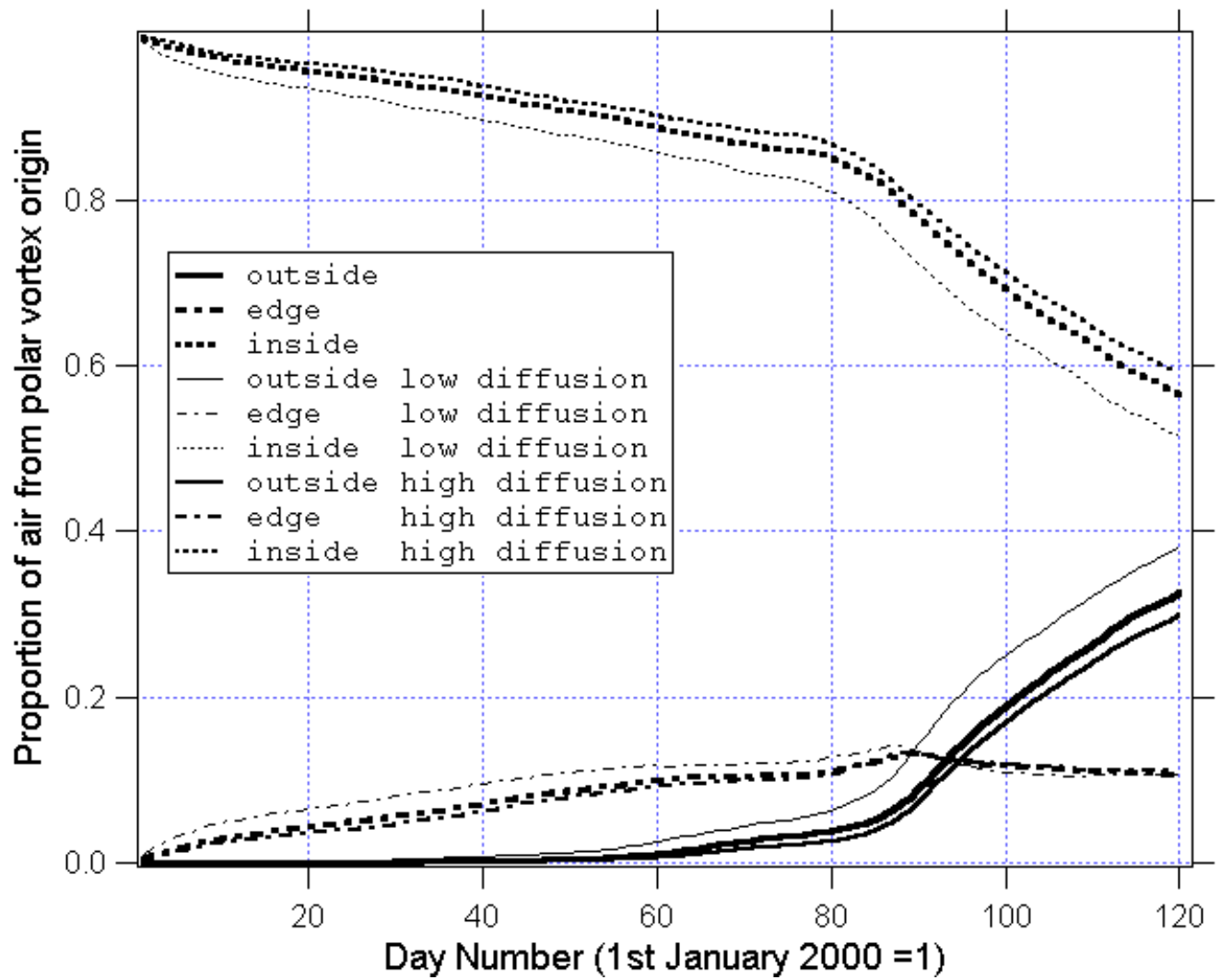


Figure 3: Evolution during winter 2000 of the proportion of air of polar vortex origin (equivalent latitude $> 65^{\circ}\text{N}$) on 1st January 2000 in 3 equivalent latitude bands, Equivalent latitude $> 65^{\circ}\text{N}$ (inside), $60^{\circ}\text{N} > \text{Equivalent latitude} >$

Air transported from high latitudes ($> 65^\circ\text{N}$) to mid-latitudes ($30^\circ\text{-}60^\circ\text{N}$)

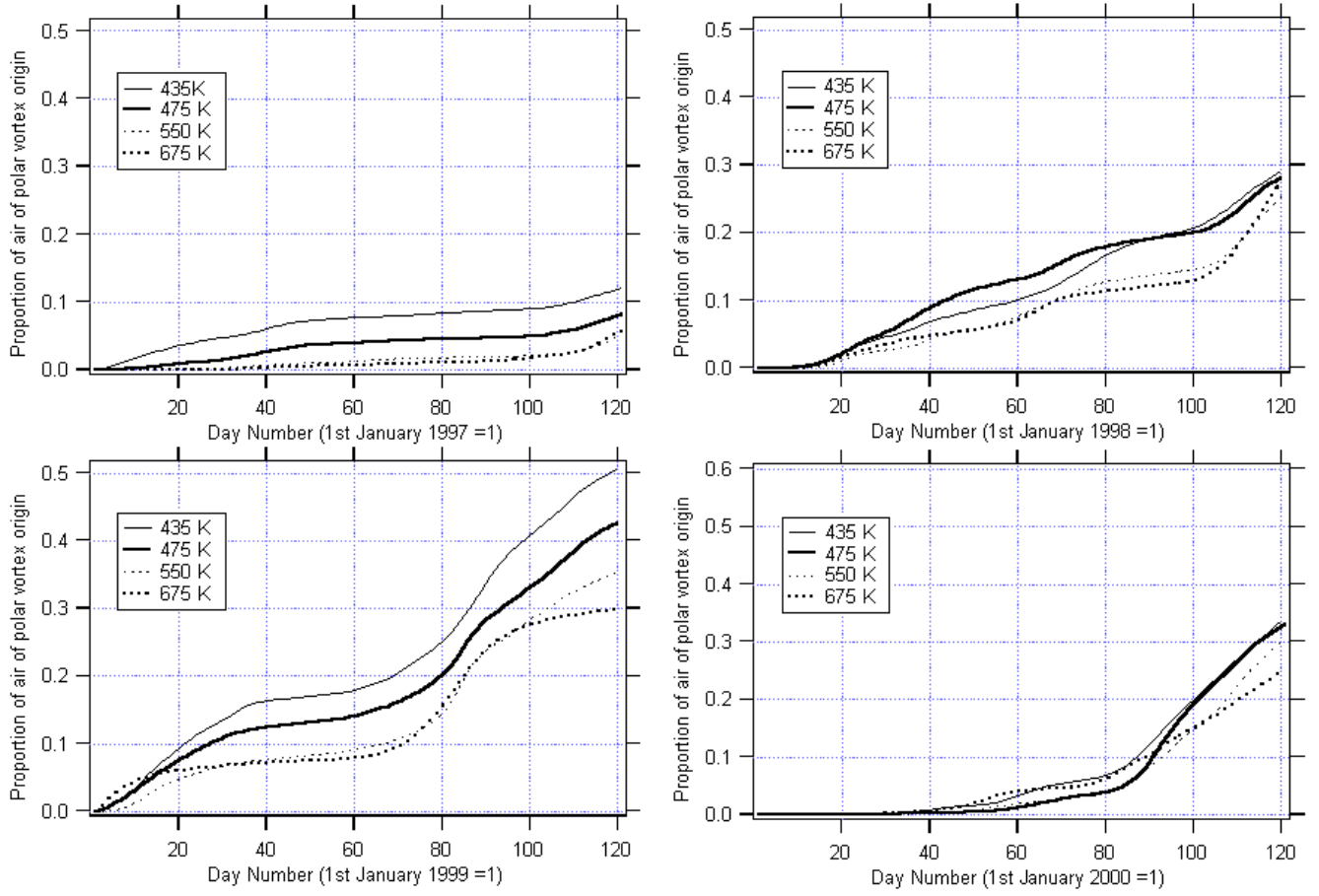


Figure 4: Proportion of air outside vortex (Equivalent latitude $< 60^\circ\text{N}$) from polar vortex origin on the 1st January of the given winter at 4 isentropic levels, 435, 475, 550 and 675 K.